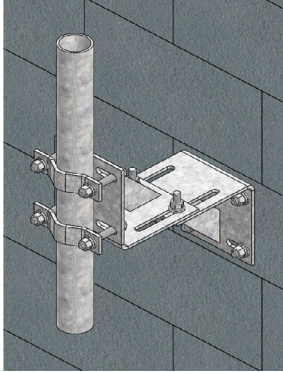




Wireless Solutions Universal Wall Mount Series

for Adjustable Stand-off from Hollow or Solid Walls



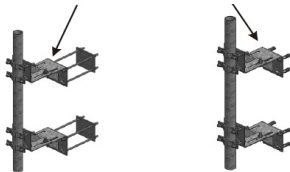
Ensure Reliability of Your Site

Wireless Solutions' Universal Wall Mounts provide a mounting solution for microwave, directional or wireless antennas including RRUs. These mounts will accept 3/4" up to 2-3/8" O.D. mounting pipes. The Wall Mount Series accommodates a stand-off range from 7" to 24".

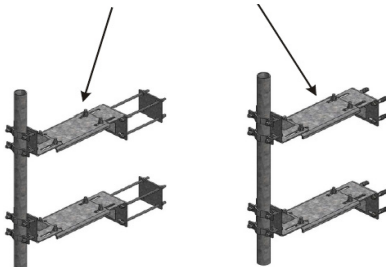
Hollow wall versions utilize a 6" x 6" backing plate and four 1/2" x 12" galvanized threaded rods for installation. Solid wall versions include 1/2" x 2-1/2" wedge anchors. All installation hardware is included. Pipes are sold separately. Hot-dip galvanized construction for long-term reliability.



Heavy Duty
Extendable 7"-12"



Heavy Duty
Extendable 14"-24"



Part Number	SKU	DESCRIPTION	Adjustable Stand-Off	Weight	Kit QTY
WSLDHWM-U-712	540733	Universal Light Duty Hollow Wall Mount	7" - 12"	22 lbs	1
WSLDSWM-U-712	540732	Universal Light Duty Solid Wall Mount	7" - 12"	17 lbs	1
WSHDHWM-U-712	510731	Universal Heavy Duty Hollow Wall Mount	7" - 12"	43 lbs	1
WSHDSWM-U-712	519269	Universal Heavy Duty Solid Wall Mount	7" - 12"	34 lbs	1
WSHDHWM-U-1424	510728	Universal Heavy Duty Hollow Wall Mount	14" - 24"	59 lbs	1
WSHDSWM-U-1424	510727	Universal Heavy Duty Solid Wall Mount	14" - 24"	50 lbs	1