



TerraWave Solutions® 9' Site Survey Extension Pole

Installation Instructions





Introduction

TerraWave's 9' Site Survey Extension Pole is used during a professional site survey to assist system engineers with a convenient way to raise an access point (AP) and antenna to an extended height without the need and use of a ladder.

The maximum height of the site survey extension pole is 9 Feet.

Before assembling this product, read these instructions carefully. Failure to follow these instructions could lead to damage to the product or cause hazardous conditions.

Included Components

TerraWave Part Number: TWS-SSROD-BUND
TESSCO SKU: 362747

Kit Includes:

- Site Survey Extension Pole
- Universal Mounting Bracket
- Traveling Case with Wheels

TerraWave Part Number: TWS-SSROD-BKT
TESSCO SKU: 392506

Kit Includes:

- Site Survey Extension Pole
- Universal Mounting Bracket

Technical Specifications and Features

Site Survey Extension Pole

- Maximum Height Extended: 9'
- Height Contracted: 3.5'
- Footprint with Legs Extended: 40" x 40 "
- Weight: 8.5 lbs

Universal Mounting Bracket

- Length with Wings Extended: 20"
- Width with Wings Extended: 9"
- Wing Dimensions: 8" x 5"
- Weight: 1.5 lbs

Traveling Carrying Case with Wheels

- Material: Durable black canvas with Vinyl trim
- Handling: Equipped with strong top handle and comfortable, padded carrying strap for easy portability.
- Case Dimensions: 49" x 9"
- Wheel Diameter: 4"



Precautions

Read and understand all instructions before you begin assembling the unit.

When assembling and using this product, basic safety precautions and considerations should always be followed to reduce the risk of personal injury.

Do not leave unattended at any time.

Exercise caution when using this product outdoors or around electrical wiring as there is a potential for electrical shock.

Do not use liquid cleaners or aerosol cleaners. Use a damp cloth for cleaning.

Please note that mounting brackets/fasteners to attach the antenna to the mounting plate are *not* included in either site survey extension pole kit.

Warnings

Caution: Beware of tipping when the extension pole is fully extended with a mounted AP and antenna. Do not set up on an uneven surface.

Caution: Due to a possible tipping hazard, do not attach a battery pack to mounting plate.

Do not use near open electrical wiring.

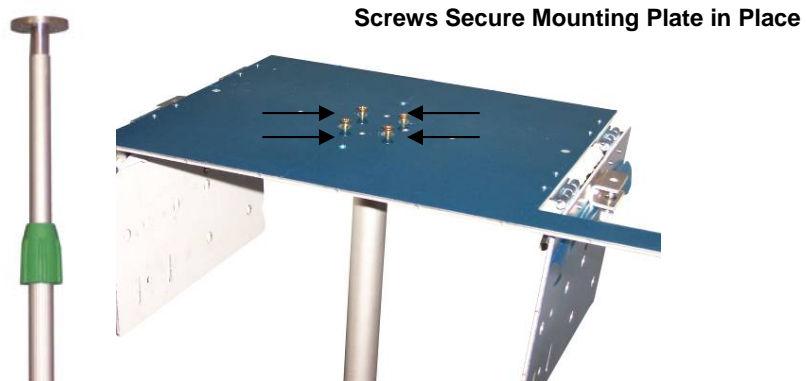
Assemble the unit according to these instructions only using the recommended hardware.

Installation Instructions

1. To assemble a newly purchased Site Survey Extension Pole, remove it from the carrying case (only if part number: TWS-SSROD-BUND was ordered). Extend the base fully and ensure the feet of the base are lying flat on the ground. **Note: You may have to loosen the locking mechanism of the pole, located on the top half of the base. (See image on next page.)**



2. Affix the extension pole mounting bracket to the top of the pole. Secure the extension pole mounting bracket with the 4 screws included.



Each extension pole kit is supplied with a mounting plate to be used for attaching WLAN/Networking components. The diagrams on the following pages show detailed dimensions of the mounting plate and hole configuration.

Diagram 1

Top View

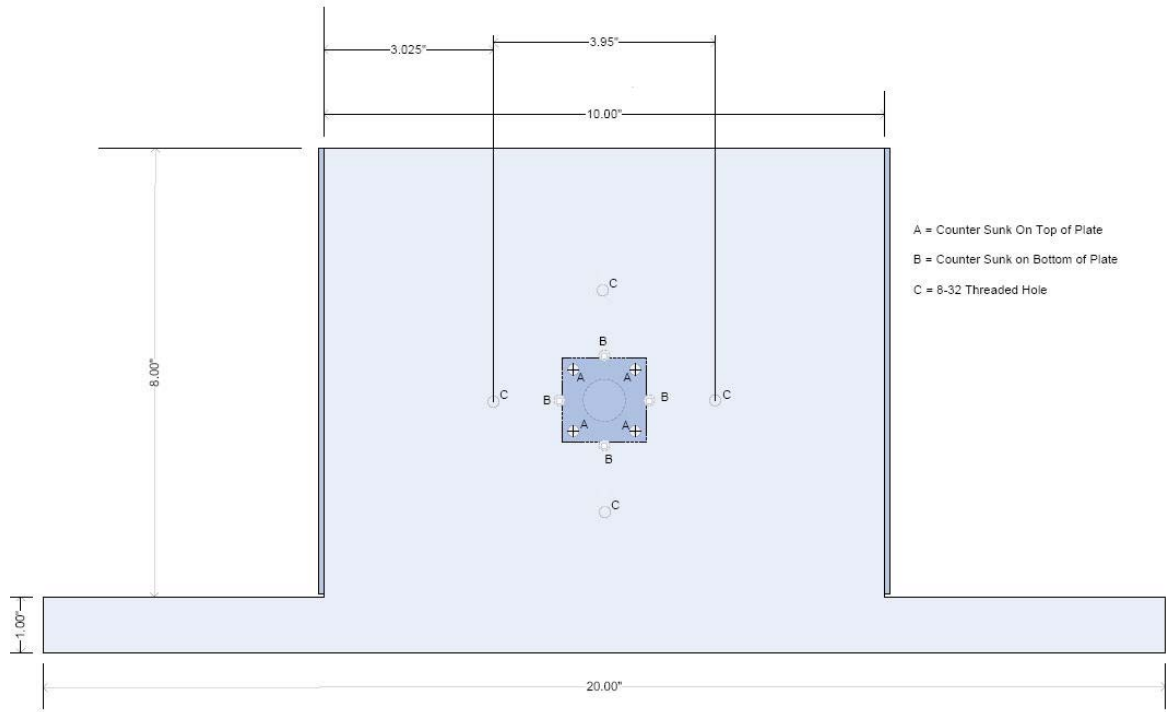


Diagram 2

Side View

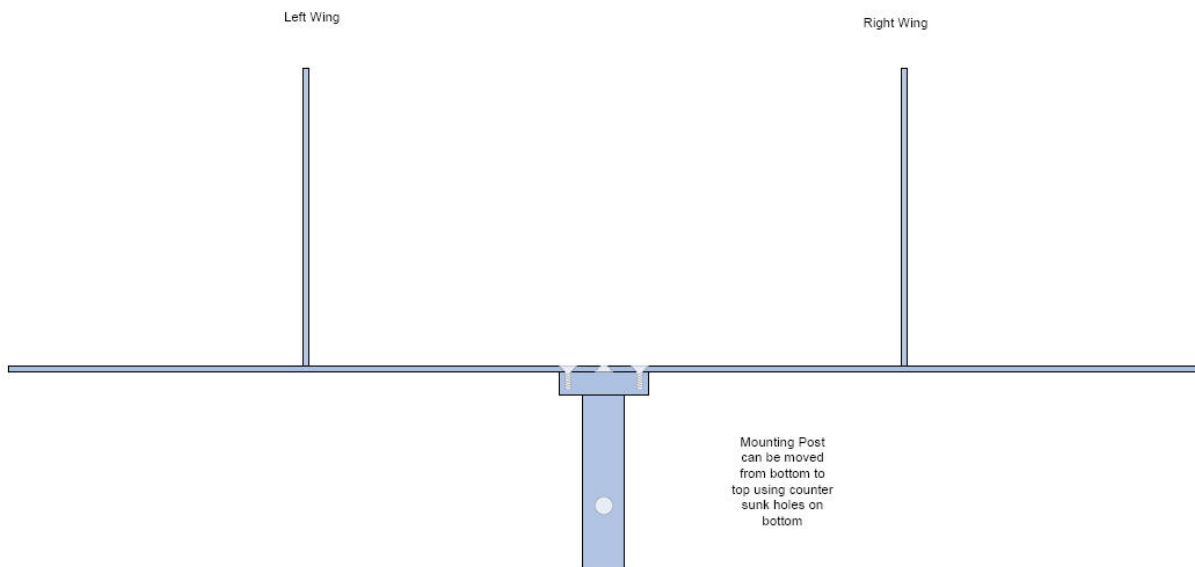


Diagram 3
Left Wing View

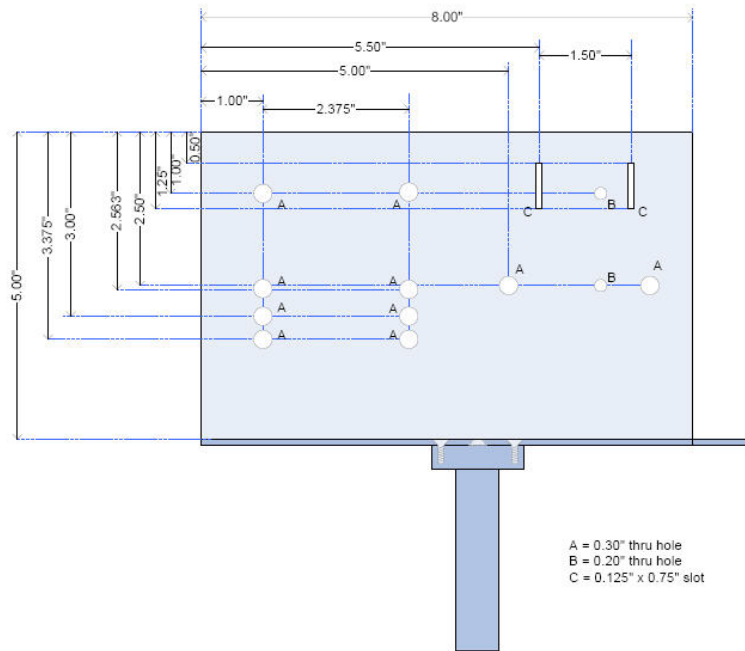
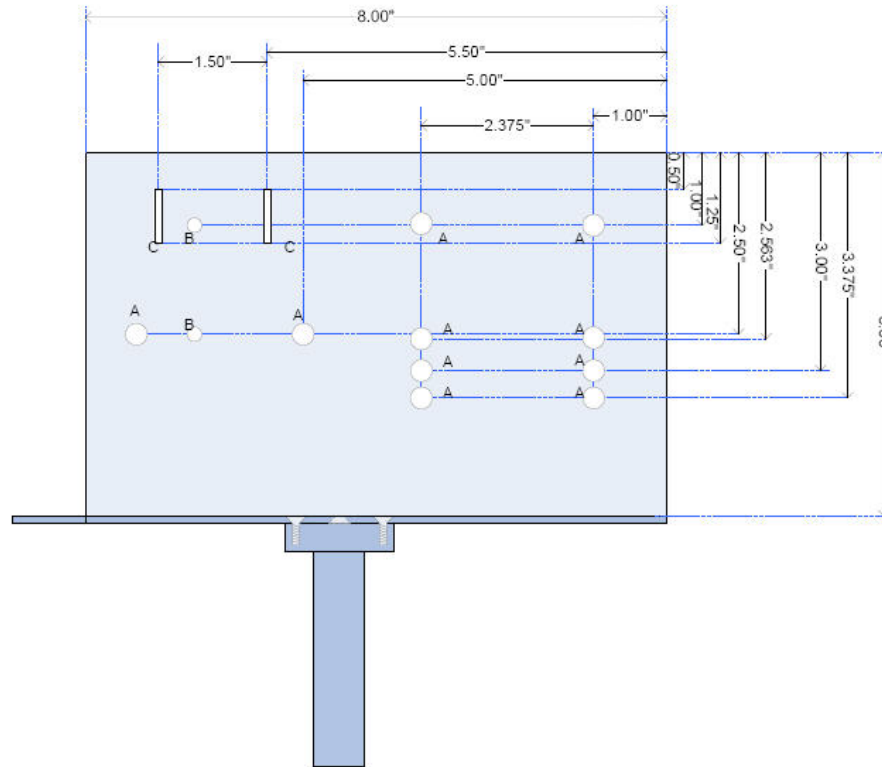


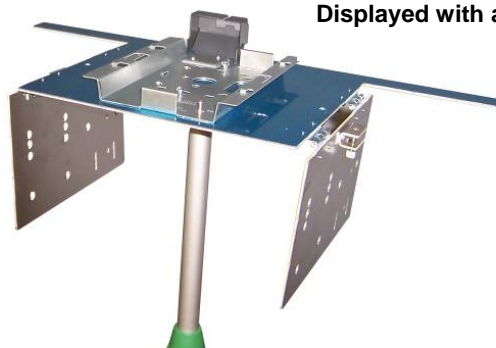
Diagram 4

Right Wing View



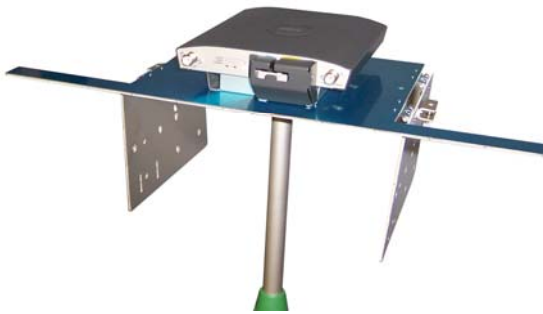
3. Attach the AP's mounting bracket with the included screws.

Displayed with a Cisco AP 1242 Mounting Bracket

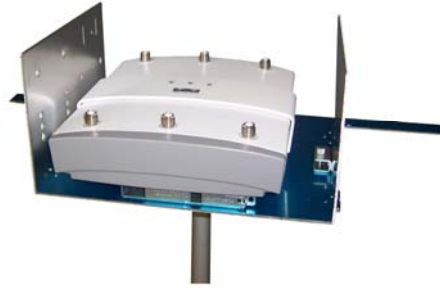


4. Attach the AP to the AP's mounting bracket.

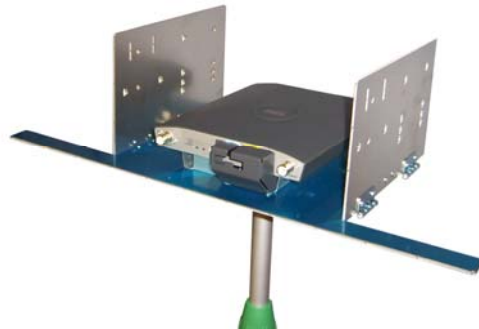
Displayed with a Cisco AP 1242



Displayed with a Cisco AP 1252

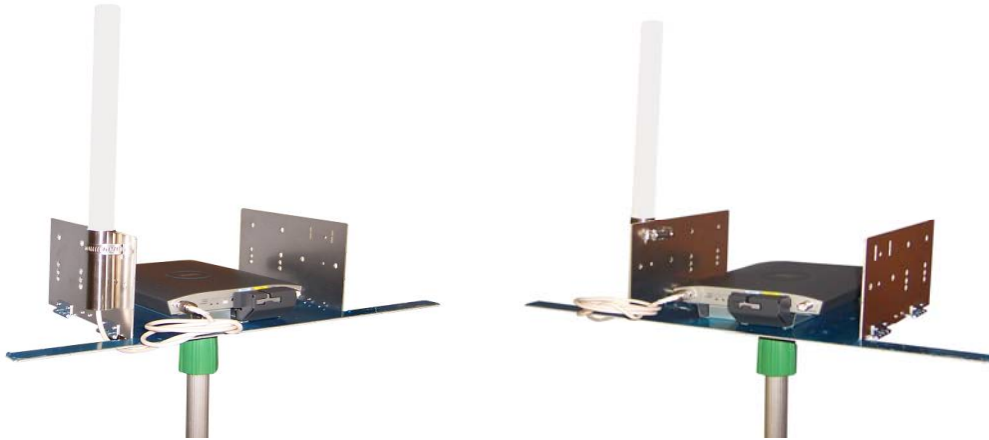


5. To lock the side wings in place, hold the wings up and tighten the thumb screws.

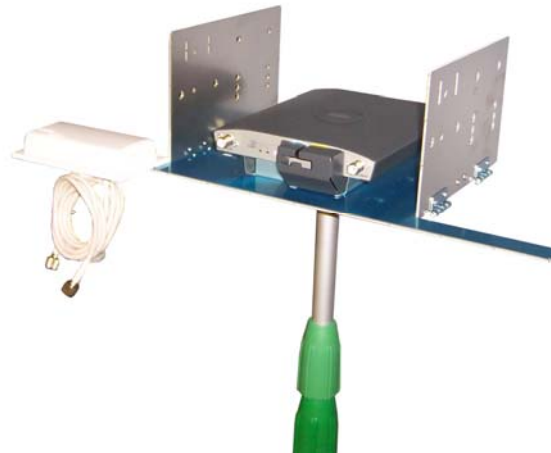


6. Antenna Attachment:

- a. Depending on the type of antenna being used, users can use the hardware that came with the antenna (i.e. hose clamp) or just attach with a zip tie (not included). Please note that mounting brackets/fasteners to attach the antenna to the mounting plate are *not* included in either site survey extension pole kit.



- b. For ceiling mount antennas, attach the clips (if not done already) and clip onto the side bar of the mounting plate.





7. Extend the pole to the desired height and hand-tighten the green knobs.



Important Note: When extending the pole, turn the green knobs counter-clockwise to loosen, extend to the desired height and turn the green knobs clockwise to tighten and hold in place.